




33 Leggett Street Spring Farm NSW

4  3  2 

This stunning, 4-bedroom double storey house on a big corner lot is positioned in a central location and must be seen to be truly appreciated. If you are looking for something larger in size, then this property should be on the top of your list.

The seamless combination of space, natural light, quality finishes, elegant colour palette, and a practical design effortlessly create a home that is both extremely inviting and immensely liveable. Offering a generous separate lounge upstairs, combined family/dining, and a central living area that flows out onto an extended entertaining area, this is a home that is extremely functional.

Property Features :

- Generous main bedroom with an oversized walk-in robe and private balcony

Price : \$ 1,042,500

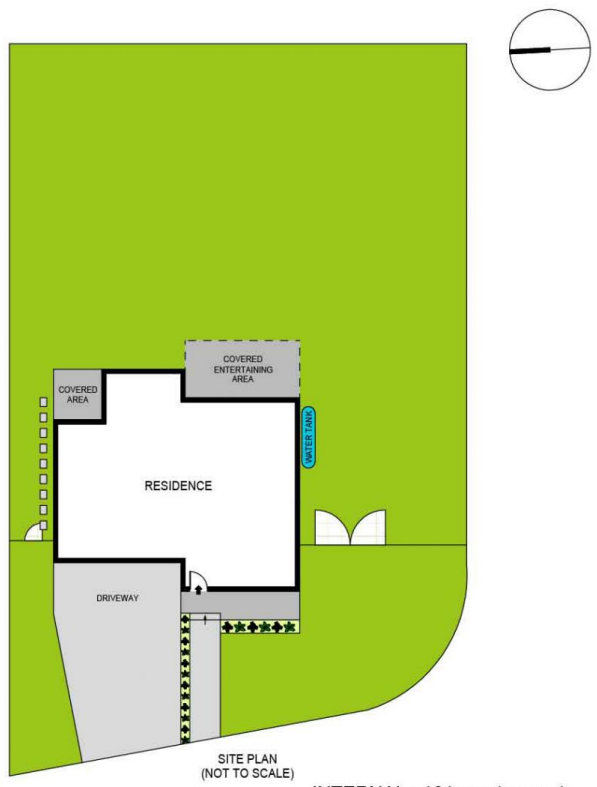
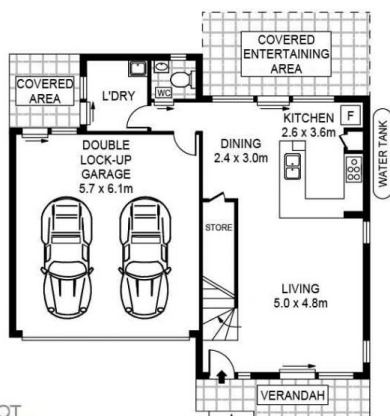
View : <https://www.mascotpartners.com.au/7705495>



Junianto Junianto
02 8357 3377



Anna Le
02 8357 3377



INTERNAL : 161sqm (approx)



This floor plan is for marketing purposes and is to be used as a guide only. All efforts have been made to ensure its accuracy although interested parties are urged to rely on their own enquiries.