



503A/264 Anzac Parade KENSINGTON NSW

2  2  1 

A luxurious residential split level apartment, Capella is a landmark building and one of Kensington's most recognised buildings. Flowing over two levels on the top floor and finished to the highest of standards with superb ultra-contemporary appointments throughout, surrounded by sunny landscaped gardens with a heated 25M lap pool offering the ultimate in resort-style urban living that is little more than a short stroll to the University of New South Wales and the swapping grounds of Centennial Park.

Type : Apartment

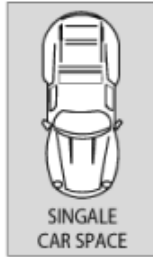
View : <https://www.mascotpartners.com.au/7705505>

Property Features :

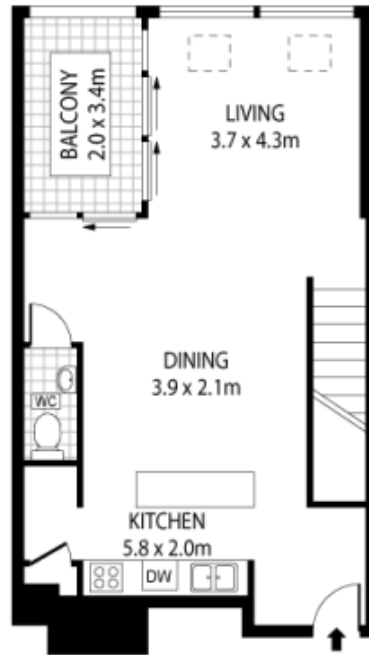
- Downstairs 2 bedrooms all with built-in robes, main bedroom with an ensuite
- Open plan living and dining area leading to an enclosed balcony

[For full version visit the website](https://www.mascotpartners.com.au/7705505)

<https://www.mascotpartners.com.au>



LEVEL FOUR



LEVEL FIVE



This floor plan is for marketing purposes and is to be used as a guide only. All efforts have been made to ensure its accuracy although interested parties are urged to rely on their own enquiries.