



149-163 Mitchell Road Erskineville NSW

Designed by award-winning Turner Architects, Arbor reflects the heritage of Erskineville's terrace-lined streets, as well as the local area's distinct sense of energy and creativity.

As Park Sydney's new Stage 2 building, Arbor is the next exciting phase in Sydney's largest master planned community.

Park Sydney is at the forefront of the new Erskineville, an exciting up-and-coming neighbourhood, perfectly positioned just 4km from Sydney's CBD, and in easy walking distance to Newtown and Green Square.

Connected to key transport, leading schools and

[For full version visit the website](https://www.mascotpartners.com.au/7759707)

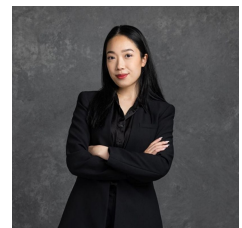
Type : Apartment

Price : Start from \$778,000

View : <https://www.mascotpartners.com.au/7759707>



Junianto Junianto
02 8357 3377



Kaylee Ho
02 8357 3377