



**2/205 Maroubra Road Maroubra NSW**

1  1  1 

Located in the heart of Maroubra Junction, this luxurious one-bedroom unit features an open-plan layout, modern finishes, and plenty of natural light. It's ideally situated within walking distance of Pacific Square shopping centre, restaurants, cafes, and public transport, placing all major amenities and conveniences right at your doorstep.

- Open-plan living and dining area leading to a sunny covered balcony
- Bedroom with built-in wardrobes
- Spacious Study
- Plenty of cupboard and linen storage
- Secure building with intercom, lift access
- Communal rooftop entertaining area
- Secure parking space

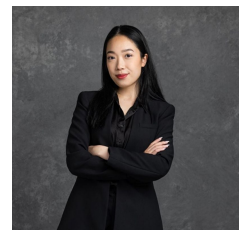
Situated in the heart of the Junction with all the

**Price** : \$ 820,000

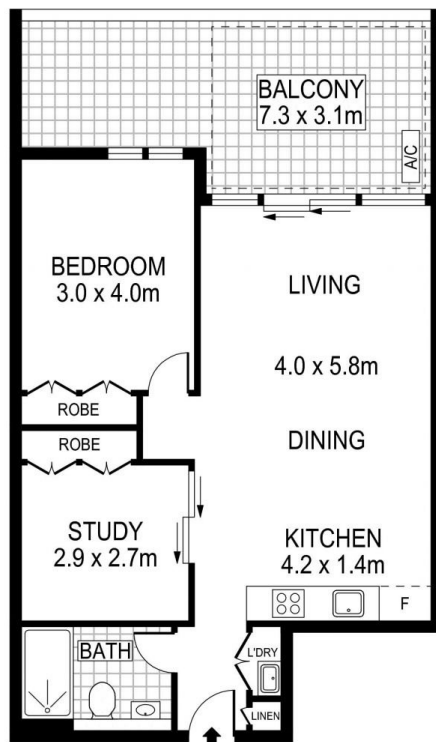
**View** : <https://www.mascotpartners.com.au/8067378>



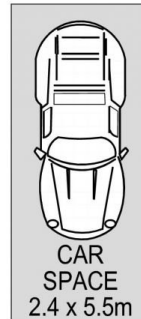
**Junianto Junianto**  
**02 8357 3377**



**Kaylee Ho**  
**02 8357 3377**



**LEVEL TWO**



INTERNAL : 62sqm (approx)



This floor plan is for marketing purposes and is to be used as a guide only. All efforts have been made to ensure its accuracy although interested parties are urged to rely on their own enquiries.