



1808/161 Clarence Street Sydney NSW

3  2 

Situated in the heart of the CBD, this luxurious apartment boasts top-of-the-line features and finishes. Ideally located within walking distance to QVB shops, Barangaroo, and public transport, this residence is part of the architectural masterpiece, ARC by Crown. Setting a new standard for upscale urban living, it features an impressive single-level layout and provides full access to the building's premium resort-style amenities.

Type : Apartment

Price : \$1,549,000 - \$1,649,000

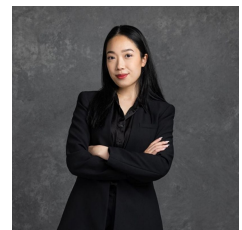
View : <https://www.mascotpartners.com.au/8067379>

Property Features:

- Designed by the globally acclaimed architect Koichi Takada, known for his innovative vision
- Located on the 18th floor with a spacious open-plan layout

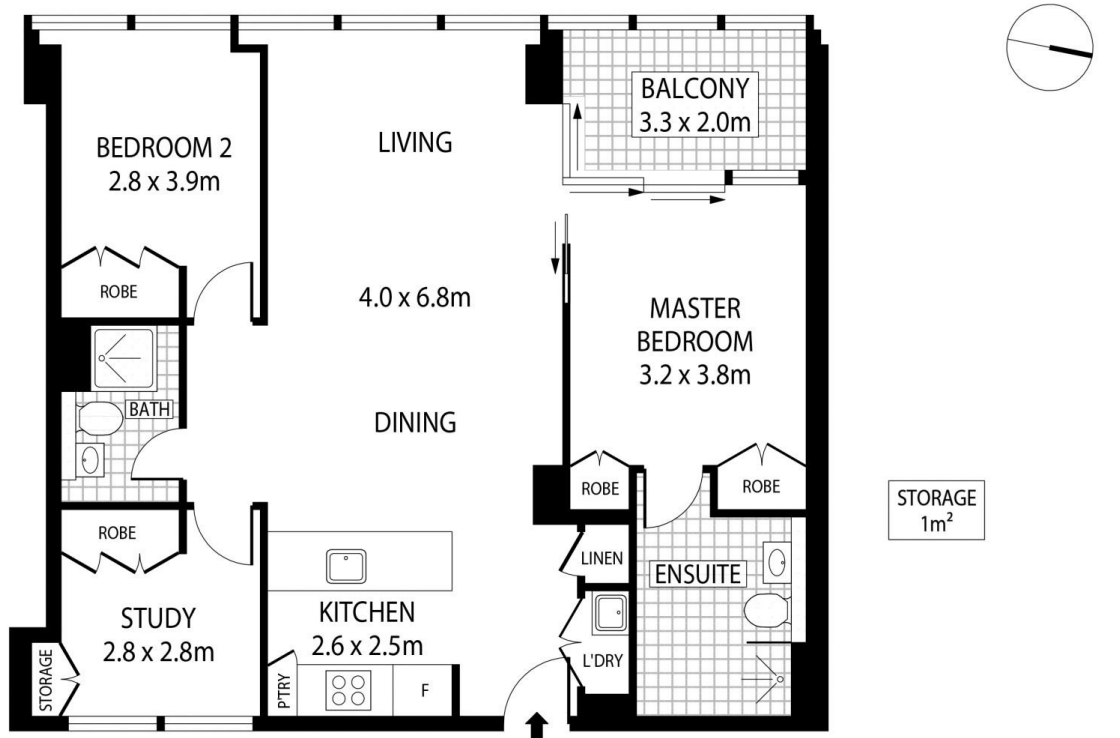


Junianto Junianto
02 8357 3377



Kaylee Ho
02 8357 3377

[For full version visit the website](https://www.mascotpartners.com.au)



LEVEL EIGHTEEN



This floor plan is for marketing purposes and is to be used as a guide only. All efforts have been made to ensure its accuracy although interested parties are urged to rely on their own enquiries.