



**39/208-210 Parramatta Road Homebush NSW**

1  1  1 

This complex is located within close proximity to Homebush and Flemington Train Stations, local schools, cafes, buses and an abundance of local amenities, including the lively Flemington Markets for fresh produce.

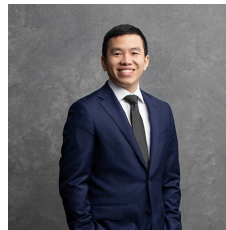
**Type** : Apartment

**Price** : Contact Agent

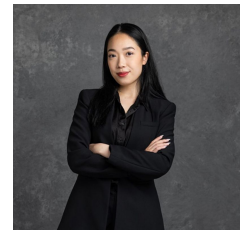
**View** : <https://www.mascotpartners.com.au/8125706>

**Features:**

- One bedroom with built-in wardrobe
- Stunning long kitchen with oven, dishwasher and gas cooktop
- Wooden flooring in the living room
- Great sized bathroom with internal laundry
- Balcony with lots of natural light
- Lift access from basement to floor landing
- Secure building with intercom offering the very best in safety



**Reinard Surya**  
02 8357 3377



**Kaylee Ho**  
02 8357 3377

[For full version visit the website](https://www.mascotpartners.com.au)